

Major Caribbean and Central American frog faunas originated by ancient oceanic dispersal

Matthew P. Heinicke*, William E. Duellman†, and S. Blair Hedges**

*Department of Biology, Pennsylvania State University, University Park, PA 16802-5301; and †Natural History Museum and Biodiversity Research Center, University of Kansas, Lawrence, KS 66045

Edited by David B. Wake, University of California, Berkeley, CA, and approved May 5, 2007 (received for review December 12, 2006)

Approximately one-half of all species of amphibians occur in the New World tropics, which includes South America, Middle America, and the West Indies. Of those, 27% (801 species) belong to a large assemblage, the eleutherodactyline frogs, which breed out of water and lay eggs that undergo direct development on land. Their wide distribution and mode of reproduction offer potential for resolving questions in evolution, ecology, and conservation. However, progress in all of these fields has been hindered by a poor understanding of their evolutionary relationships. As a result, most of the species have been placed in a single genus, *Eleutherodactylus*, which is the largest among vertebrates. Our DNA sequence analysis of a major fraction of eleutherodactyline diversity revealed three large radiations of species with unexpected geographic isolation: a South American Clade (393 sp.), a Caribbean Clade (171 sp.), and a Middle American Clade (111 sp.). Molecular clock analyses reject the prevailing hypothesis that these frogs arose from land connections with North and South America and their subsequent fragmentation in the Late Cretaceous (80–70 Mya). Origin by dispersal, probably over water from South America in the early Cenozoic (47–29 million years ago, Mya), is more likely.

amphibian | anura | biogeography | *Eleutherodactylus*

The evolutionary tree of amphibians is now being revealed at a rapid pace, largely from DNA sequence analyses (1–5). However, the evolutionary history of a major assemblage of frogs is not well understood. These are the eleutherodactylines and the related genus *Brachycephalus*, which comprise 13% (812 sp.) of all known species of amphibians and 27% of those occurring in the New World tropics (6). Unlike most temperate species, these frogs reproduce on land and undergo direct development, bypassing the tadpole stage (7). Most are relatively small, typically 20–50 mm in length. A majority of the species has been placed in *Eleutherodactylus* and, together with several other genera, assigned to the tribe Eleutherodactylini of the neobatrachian family Leptodactylidae (8), superfamily Hyloidea (9). However, molecular phylogenies of small sets of representative species over the last two decades have suggested that both the family-level and genus-level classification is in need of revision (2, 10–14).

Terrestrial breeding and direct development have allowed eleutherodactyline frogs to occupy a diversity of ecological niches and have facilitated their wide distribution (Fig. 1). Eleutherodactylines occur on almost every island in the Caribbean and display near total endemism to single-island banks. Their elevational range also is broad, with some species occurring up to 4,400 m in the Andes of South America. Thus, they are a model group for studying Neotropical biogeography and evolution. With this in mind, we assembled samples and available sequences of 276 species of eleutherodactylines and *Brachycephalus* for several mitochondrial and nuclear genes. Our goal was to identify the major groups of species and their times of divergence, to better understand the historical biogeography of eleutherodactyline frogs and the region in general. Our results revealed several major and, for the most part, geographically isolated, clades of eleutherodactyline frogs and showed that the



Fig. 1. Composite distribution of eleutherodactyline frogs and *Brachycephalus* (812 sp.). "Middle America" refers to Central America and Mexico. No evolutionary groupings are implied.

Middle American and West Indian eleutherodactylines owe their origin to Cenozoic over-water dispersal, not from land connections in the Mesozoic.

Results

Major Clades of Eleutherodactylines. After alignment and removal of ambiguous regions, the 280-species data set encompassed 1,206 sites. The 146- and 65-species data sets included 2,578 and 3,709 sites, respectively. Maximum likelihood (ML), minimum evolution (ME), and Bayesian methods defined the same major clades for all data sets [Figs. 2 and 3; and see [supporting information \(SI\) Figs. 5–13](#)]. Support values for these three groups were variable in the 280-species data set, but were uniformly significant for all methods when the data sets encompassing more nucleotide sites were used.

The three largest and most diverse groups of species are largely defined by geography, with one dominant group each in the Caribbean region, Middle America, and northern South America. A smaller fourth group is found in southeast Brazil. By

Author contributions: M.P.H. and S.B.H. designed research; M.P.H. and S.B.H. performed research; M.P.H. and S.B.H. analyzed data; and M.P.H., W.E.D., and S.B.H. wrote the paper.

The authors declare no conflict of interest.

This article is a PNAS Direct Submission.

Abbreviations: 12S, 12S ribosomal RNA; 16S, 16S ribosomal RNA; ME, minimum evolution; ML, maximum likelihood.

Data deposition: The sequences reported in this paper have been deposited in the GenBank database (accession nos. EF493342–EF493828).

*To whom correspondence should be addressed. E-mail: sbh1@psu.edu.

This article contains supporting information online at www.pnas.org/cgi/content/full/0611051104/DC1.

© 2007 by The National Academy of Sciences of the USA

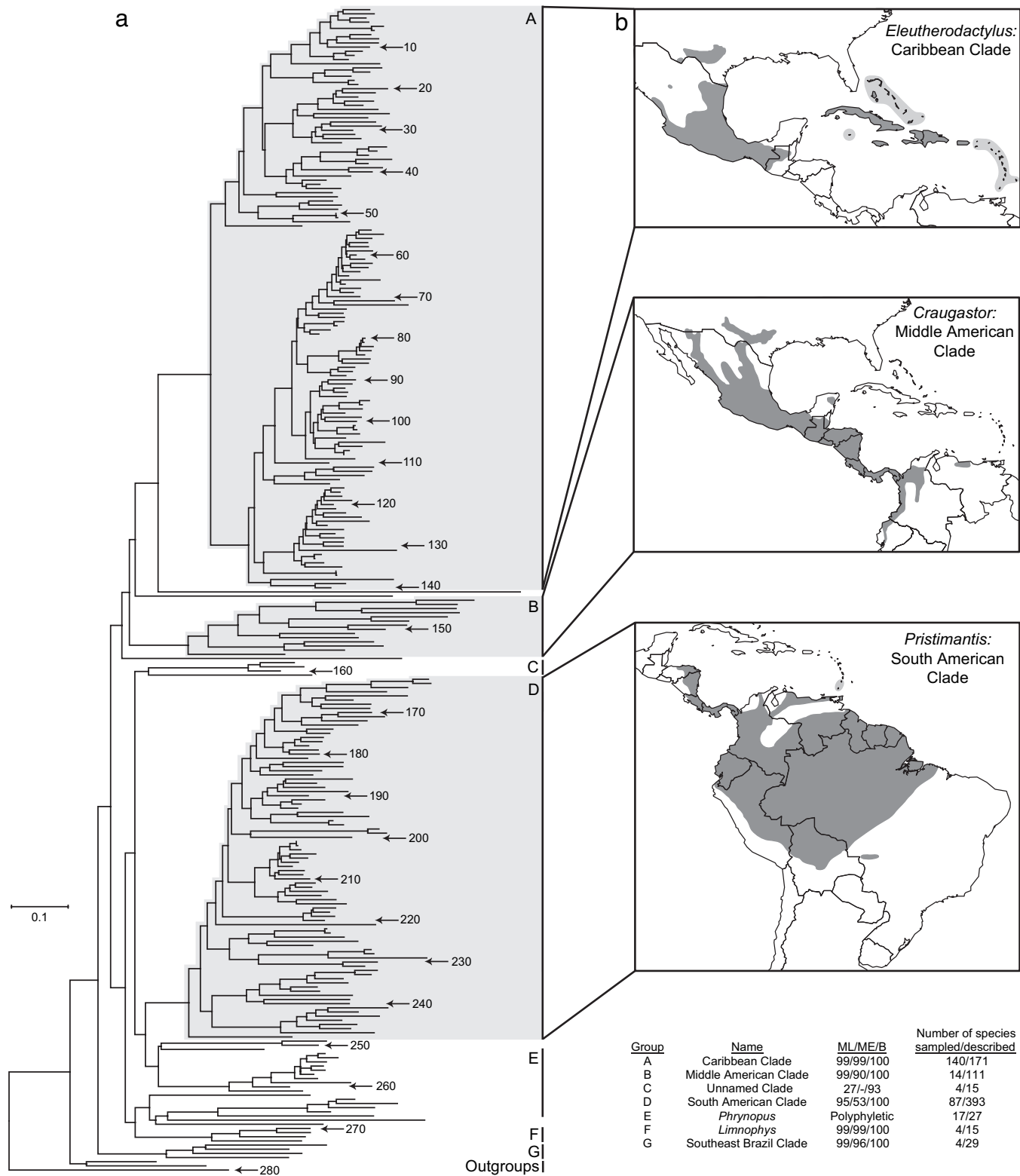


Fig. 2. Major clades of eleutherodactyline frogs. (a) ML phylogeny of 280 species of frogs including eleutherodactylines, *Brachycephalus*, and three out-group species. Species are numbered according to SI Table 4. Major groups with support values (ML bootstrap/ME bootstrap/Bayesian posterior probability), number of species sampled, and total number of described species per clade are indicated. ML, ME, and Bayesian trees including taxon names and all confidence values are available (SI Figs. 5–7). (b) Distribution of Caribbean, Middle American, and South American clades.

using past species–group affiliations, it was possible to assign species not included in this study to these major genetically defined clades (SI Table 2). The first major group, which we call

the Caribbean Clade (*Eleutherodactylus*), consists of the West Indian members of the subgenus *Eleutherodactylus* (47 sp.), the subgenus *Pelorius* of Hispaniola (6 sp.), the West Indian subge-

Table 1. Times of divergence (Mya) for major nodes in Fig. 3

Node	Divergence	Time	95% C.I.*
1	Eleutherodactylines plus <i>Brachycephalus</i> /hyliid frogs	56.79	(43.52, 78.13)
2	Southeast Brazil Clade (SBC)/other species	49.79	(37.18, 68.67)
3	Caribbean Clade (CC)/other eleutherodactylines	47.28	(35.09, 65.26)
4	Middle American Clade (MAC)/other eleutherodactylines	42.39	(30.99, 58.99)
5	South American Clade (SAC)/other eleutherodactylines	36.52	(26.56, 50.81)
6	Last common ancestor of Caribbean Clade	29.09	(20.95, 40.35)
7	Last common ancestor of Middle American Clade	30.51	(21.67, 43.17)
8	Last common ancestor of South American Clade	24.45	(17.30, 34.82)
9	Middle American <i>Syrrhophus</i> /Cuban <i>Syrrhophus</i>	19.05	(13.06, 26.92)

Times are based on the combined nuclear and mitochondrial data set (3,709 bp) and measure the divergence of the two identified lineages separated by a slash. Divergence times for all nodes (combined, nuclear, and mitochondrial data sets) are presented in [SI Table 3](#) with a guide tree available as [SI Fig. 14](#). The dates of the two proposed dispersal events are constrained by nodes 3 and 6 (for the Caribbean Clade) and nodes 4 and 7 (for the Middle American Clade).

*Bayesian credibility interval.

few samples for molecular analysis. Although the Middle American Clade was known (12, 15), it had included species in South America shown here to be misclassified based on our sequence analyses. The Caribbean and South American clades, on the other hand, were unpredicted. Previous studies had assumed a close relationship between West Indian members of the subgenus *Eleutherodactylus* and the species-rich *unistrigatus* group (now in *Pristimantis*) in South America (7, 10, 11, 21). In part, this was based on shared morphological characters that may be associated with climbing habits (11). Our results show, however, that diverse morphologies and habits have evolved independently in the Caribbean and South American Clades. The geographical separation of these large clades highlights a general pattern, the greater importance of geography, revealed in many molecular phylogenetic studies (e.g., refs. 5 and 22).

Middle America and the Caribbean. The origin of the Middle American and West Indian terrestrial vertebrates has focused on two competing models in the context of current geologic models for the region (23–25). The vicariance model suggests that they arose in the Late Cretaceous (80–70 Mya) by fragmentation of a continuous land mass (proto-Antilles) and its biota located between North and South America (26–28). This occurred as the Caribbean tectonic plate moved eastward, carrying the West Indian fauna and isolating the Middle American fauna from its South American counterparts. This is in contrast to an origin of these faunas by dispersal, on flotsam from continental source areas. One difficulty for the vicariance model has been the great age (Cretaceous) of the groups required for this model, which is largely unsupported by the fossil record (29). Also, the fauna of the West Indies is peculiar in missing many higher-level groups, indicative of dispersal (30). Geologic evidence does not rule out the possibility of a proto-Antillean island chain or corridor, but does not favor the substantial emergence of land in the Antilles before the mid-Eocene (37–49 Mya) (24).

Molecular clock analyses have yielded mixed results, although most groups have shown Cenozoic divergences with their closest relatives on the mainland (23, 31, 32). Estimates of Cretaceous divergence between West Indian and mainland representatives of insectivores (33), xantusiid lizards (33, 34), and (in past studies) eleutherodactyline frogs (10, 35), suggested that those groups may be vicariant relicts of the proto-Antilles even if most others are not. However, the relictual nature of the distribution of xantusiid lizards and West Indian insectivores raises the possibility of Cenozoic dispersal to the West Indies and subsequent extinction of those mainland source populations (34). Studies indicating Cretaceous ages for Middle American and West Indian eleutherodactylines either assumed proto-Antillean

vicariance (12) or used geologic calibrations that have since been revised (10).

Based on our results, the Middle American and Caribbean clades of eleutherodactylines originated through dispersal from South America during the Cenozoic. For these clades to have originated through proto-Antillean vicariance, Mesozoic ages (e.g., 80–70 Mya) are required for divergences between these groups and their South American relatives. Instead, our data (Table 1) indicate that a single event 42–31 Mya established eleutherodactylines in Middle America, and another 47–29 Mya established eleutherodactylines in the West Indies (Fig. 4a). Early speciation in the Caribbean Clade was confined to Hispaniola and Cuba. The paleogeography of the West Indies in the

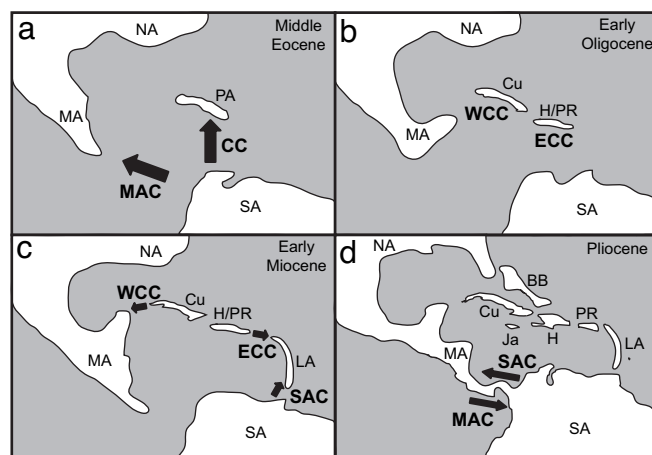


Fig. 4. Biogeographic model showing the origin of the Middle American and Caribbean clades of eleutherodactyline frogs. Location of exposed land is conjectural and based on a synthesis of models (24, 25, 50). Landmasses are abbreviated as follows: North America (NA), Middle America (MA), South America (SA), Proto-Antilles (PA), Cuba (Cu), Hispaniola (H), Puerto Rico (PR), Lesser Antilles (LA), Jamaica (Ja), Bahama Bank (BB). (a) Middle Eocene (49–37 Mya), when dispersal over water from South America probably occurred, leading to the origin of the Middle American Clade (MAC) and Caribbean Clade (CC). (b) Early Oligocene (\approx 30 Mya), when land subsidence and higher sea levels led to isolation of a western Caribbean (WCC) lineage on Cuba and an eastern Caribbean (ECC) lineage on Hispaniola and Puerto Rico. (c) Early Miocene (\approx 20 Mya), when dispersal from Cuba to the mainland led to a radiation of the subgenus *Syrrhophus* in southern North America and northern Middle America and when the Lesser Antilles were colonized by members of the ECC and South American Clade (SAC). (d) Pliocene (\approx 3 Mya), when closing of the Isthmus of Panama allowed overland dispersal of species of the MAC to South America and species of the SAC to Middle America.

mid-Cenozoic was substantially different from that today (24). Land connections between Cuba, northern Hispaniola, and Puerto Rico probably existed in the Late Eocene (≈ 35 Mya), facilitating dispersal among the islands. A proposed dry-land connection to South America at this time (24) lacks geologic support and remains controversial (23, 34). After subsidence in the Oligocene (23–34 Mya), land connections were broken, probably isolating the western Caribbean lineage (subgenera *Euhyas* plus *Syrhophus*) in Cuba from the eastern Caribbean lineage (subgenera *Eleutherodactylus* plus *Pelorius*) in northern Hispaniola and Puerto Rico (Fig. 4b).

In the Early Miocene (19 Mya), an over-water dispersal occurred from western Cuba to southern North America within the subgenus *Syrhophus* (Fig. 4c), as indicated by some earlier molecular studies (10, 11). It is possible that this lineage initially evolved in isolation to the north of the Middle American Clade, although the distributions of these two groups currently overlap. Dispersal from the Greater Antilles to the mainland has been found in other vertebrate groups, including turtles (36, 37) and anoline lizards (38). Other Miocene dispersals of eleutherodactylines, most probably over water, occurred among islands in the West Indies (Fig. 3). The direction of some of these dispersal events would have been against the present-day water currents, which flow primarily from southeast to northwest. However, current flow within the Caribbean may have been different in the past, before the emergence of the Isthmus of Panama (39).

A striking pattern in these results is the absence of subsequent successful colonizations of eleutherodactyline frogs in Middle America and the West Indies from South America after their origin in the early Cenozoic. Of the few exceptions, two species of the South American clade now occupy the southernmost Lesser Antilles (St. Vincent and Grenada) and 18 species of the South American Clade now occur in Middle America (see *SI Text*). In the latter case, the presence of some or all of those species may be explained by dispersal over land after the emergence of the Isthmus of Panama (≈ 3 Mya). Whether or not there were failed colonizations to Middle America and the West Indies as a result of competition (40) is unknown. Also, if the Middle American Clade and Caribbean Clade are later found to be closest relatives, the possibility that there was a stepwise dispersal (South America to one clade and from that clade to the other) should be considered.

South America. Most of the basal branches of eleutherodactylines, with some dating to the early Cenozoic, occur in South America (Fig. 3). This indicates that South America was the place of origin for the group, as it was for hyloid frogs in general (13, 14). However, the great diversity of species, including the South American Clade of 393 species, is associated with Andes. The Andean uplift is relatively recent, occurring mostly in the last 10–20 million years (41, 42). Rapid diversification within the South American Clade, which began 24 Mya and has continued to the present, was probably linked with this uplift. Mountain-building and associated climatic changes resulted in repeating patterns of habitat isolation, which, in turn, probably resulted in genetic isolation and speciation in these amphibians (7).

Despite the large number of South American species included in this analysis (123 sp.), we are missing a majority of species including many from southeastern Brazil. Our results indicate that the eleutherodactyline fauna of southeastern Brazil is distinct and includes several basal clades. This region is an isolated area of montane rainforest and is a region of endemism for other amphibians (43).

Methods

Taxon Sampling. Our data set encompasses $\approx 34\%$ of known eleutherodactyline diversity with 276 species in 12 of 18 genera, including at least one representative of every genus with more

than five described species. Included species were concentrated in the largest genera, with 140 species of *Eleutherodactylus*, 87 of *Pristimantis*, 14 of *Craugastor*, 17 of *Phrynopis*, and four of the Southeast Brazil Clade. Two hyloid species, *Agalychnis callidryas* (South America) and *Litoria caerulea* (Australia), were included for calibration of divergence times. Seven additional hyloid species and a more distant ranoid species (*Rana catesbeiana*) were included as out groups.

Data Collection. Our study included data from three mitochondrial genes: 12S ribosomal RNA (12S), 16S ribosomal RNA (16S), and intervening tRNA-Valine. In addition, fragments from two nuclear protein-coding genes were sequenced: recombination-activating gene 1 (*Rag-1*) and the tyrosinase gene (*Tyr*). Approximately 90% of the sequences used are previously uncharacterized. Data were collected as overlapping sets (*SI Table 4*) of 280 species (two genes), 146 species (three genes), and 65 species (five genes).

For the 280-species data set, partial 12S and 16S sequences were assembled for 277 in-group and three out-group species and used to define major clades (here recognized as genera and subgenera). This data set consists of an ≈ 350 -bp fragment of 12S concatenated with a ≈ 800 -bp fragment of 16S. For the 146-species data set, complete 12S and 16S sequences (≈ 2.5 kb), including the intervening tRNA and fragments of the flanking tRNA sequences, were assembled for 136 species representing all major groups as defined by the partial data set, the same three out-group species, and seven additional hyloid out-group species. This data set was used to test groups found with the 280-species data set, confirm rooting within eleutherodactylines by using additional out groups, and define subgroups within the largest clades. For the 65-species data set, we also included sequences from a 493-bp region of *Tyr* and a 639-bp region of *Rag-1*. This sample included representatives of most major clades and subclades, except where specimen availability or quality were limiting. Methods of sample collection, DNA extraction, amplification, and sequencing are presented in the *SI Text*, along with a list of primers (*SI Table 5*). When available, sequences for species of interest were obtained from GenBank (*SI Table 4*).

Phylogenetic Analyses. Reconstructions of phylogenies for all data sets were performed by using ME, ML, and Bayesian methods. For ML and Bayesian analyses, the 65-species data set was divided into three partitions: 12S and 16S, *Rag-1*, and *Tyr*. ME analyses were implemented in MEGA 3.1 (44) by using the TN + Γ model of evolution. PAUP 4b10 (45) was used to estimate the γ -parameter, and branch support was assessed with 2,000 bootstrap replicates. ML analyses used RAXML-VI-HPC v.2.0 (46), accessed at the San Diego Supercomputing Center. For each data set, 100 alternative runs were performed under the GTRMIX model of evolution. Other parameters were maintained at default settings. Nonparametric bootstrap analysis (1,000 replicates) was used to provide branch support values for the most likely tree of 100 found in each data set. MrBayes 3.1 (47) was used to perform Bayesian analyses. Bayesian analyses used the GTR + I + Γ model of evolution, with all parameters unlinked in partitioned analyses. For the 65-species data set, all phylogenetic analyses were performed by using only the two nuclear genes in addition to analyses employing both the mitochondrial nuclear data, to ensure that mitochondrial and nuclear data produced results that were not significantly divergent. Additional details of analyses are available in the *SI*.

Divergence Timing. Times of divergence were estimated for the 65-species data set by using the T3 version of Multidivtime (48, 49). The assumed topology was from the five-gene ML analysis. The data were divided into three partitions, as in the phylogenetic analyses. In addition to estimating times by using all

available data, timing analyses were also performed by using mitochondrial and nuclear data separately. A total of five calibrations, including both upper and lower bounds within and outside the eleutherodactylines, were used based on geologic and fossil evidence. These included the earliest divergence in the Jamaican radiation of the subgenus *Euhyas* (10 Mya, maximum constraint), the earliest divergence in the Hispaniolan South Island radiation of *Euhyas* (10 Mya, maximum), the divergence of the subgenera *Eleutherodactylus* and *Pelorius* (15 Mya, minimum), and the divergence of South American and Australian hylids (35 Mya, minimum; 70 Mya, maximum). Additional details for these and other priors are available in *SI Text*.

S.B.H. especially thanks Lori Fritz, Jennifer R. Grubb, Genna M. Lutz, Molly E. Means, Rebecca Montrose, Michael R. Tracy, and Cecelia Youngblood for their contributions to the initial generation of data for this project. We thank Jonathan A. Campbell and Eric N. Smith (University of Texas, Arlington, TX), David Cannatella (University of Texas, Austin, TX), Luis A. Coloma (Catholic University of Ecuador,

Quito, Ecuador), Andrew J. Crawford (Smithsonian Tropical Research Institute, Balboa, Republic of Panama), Luis Diaz (Museum of Natural History, Havana, Cuba), Ronald Heyer and Addison Wynn (Smithsonian Institution, Washington, DC), Edgar Lehr (University of Kansas), John D. Lynch (National University of Colombia, Bogota, Colombia), Linda R. Mason (University of Iowa, Iowa City, IA), Lily Rodriguez (University of San Marcos, Lima, Peru), Michael Schmid (University of Würzburg, Würzburg, Germany), and Steven Werman (Mesa State College, Grand Junction, CO), for providing some samples and sequences; Paul Mann for discussion of geological history; and Bernard Moret for providing computer time on the NSF-funded CIPRES cluster at the San Diego Supercomputer Center. Richard Thomas (University of Puerto Rico, San Juan, Puerto Rico) contributed significantly to field work in the West Indies. This research was supported by National Aeronautics and Space Administration Grant NNA04CC06A (to S.B.H.) and by National Science Foundation (NSF) Grants 8906325, 9123556, 9525775, and 9615643 (to S.B.H.), 8307115 (to Richard Highton, University of Maryland, College Park, MD), 8805920 (to W.E.D.), and especially by NSF-Assembling the Tree of Life (AToL) Amphibia-Tree Project Grant 0334952 (to David Cannatella and David Hills, University of Texas, Austin, TX).

- Bossuyt F, Brown RM, Hillis DM, Cannatella DC, Milinkovitch MC (2006) *Syst Biol* 55:579–594.
- Frost DR, Grant T, Faivovich J, Bain RH, Haas A, Haddad CFB, De Sa RO, Channing A, Wilkinson M, Donnellan SC, et al. (2006) *Bull Am Mus Nat Hist* 297:1–371.
- Wiens JJ, Fetzner JW, Parkinson CL, Reeder TW (2005) *Syst Biol* 54:719–748
- Parra-Olea G, Garcia-Paris M, Wake DB (2004) *Biol J Linn Soc* 81:325–346.
- Zhang P, Chen YQ, Zhou H, Liu YF, Wang XL, Papenfuss TJ, Wake DB, Qu LH (2006) *Proc Natl Acad Sci USA* 103:7360–7365.
- AmphibiaWeb (2007) *AmphibiaWeb: Information on Amphibian Biology and Conservation* (University of California, Berkeley, CA) <http://amphibiaweb.org>.
- Lynch JD, Duellman WE (1997) *U Kansas Spec Publ* 23:1–236.
- Lynch JD (1971) *U Kansas Mus Nat Hist Misc Publ* 1–238.
- Frost DR (2007) *Amphibian Species of the World: An Online Reference Version 5.0* (American Museum of Natural History, New York) <http://research.amnh.org/herpetology/amphibia/index.php>.
- Hass CA, Hedges SB (1991) *J Zool* 225:413–426.
- Hedges SB (1989) in *Biogeography of the West Indies: Past, Present, and Future*, ed Woods CA (Sandhill Crane, Gainesville, FL), pp 305–370.
- Crawford AJ, Smith EN (2005) *Mol Phylogenet Evol* 35:536–555.
- Darst CR, Cannatella DC (2004) *Mol Phylogenet Evol* 31:462–475.
- Ruvinsky I, Maxson LR (1996) *Mol Phylogenet Evol* 5:533–547.
- Lynch JD (1986) *Herpetologica* 42:248–258.
- Lynch JD (2000) *Rev Acad Colomb Cienc Exac Fisic Nat* 24:129–156.
- Savage JM, Myers CW (2002) *Am Mus Novit* 1–48.
- Siqueira S, Ananias F, Recco-Pimentel SM (2004) *Genet Mol Biol* 27:363–372.
- Lehr E, Fritsch G, Muller A (2005) *Zool Scr* 34:593–603.
- Roelants K, Gower DJ, Wilkinson M, Loader SP, Biju SD, Guillaume K, Moriau L, Bossuyt F (2007) *Proc Natl Acad Sci USA* 104:887–892.
- Joglar RL (1989) in *Biogeography of the West Indies: Past, Present, and Future* (Sandhill Crane, Gainesville, FL), pp 371–408.
- Bossuyt F, Meegaskumbura M, Beenaerts N, Gower DJ, Pethiyagoda R, Roelants K, Mannaert A, Wilkinson M, Bahir MM, Manamendra-Arachchi K, et al. (2004) *Science* 306:479–481.
- Hedges SB (2001) in *Biogeography of the West Indies: Patterns and Perspectives*, eds Woods CA, Sergile FE (CRC, Boca Raton, FL), pp 15–33.
- Iturralde-Vinent MA, MacPhee RDE (1999) *Bull Am Mus Nat Hist* 238:1–95.
- Pindell JL (1994) in *Caribbean Geology: An Introduction*, eds Donovan SK, Jackson TA (The University of the West Indies Publishers' Association, Kingston, Jamaica), pp 13–39.
- Rosen DE (1975) *Syst Zool* 24:431–464.
- Rosen DE (1985) *Ann MO Bot Gard* 72:636–659.
- Savage JM (1982) *Ann MO Bot Gard* 69:464–547.
- Pregill GK (1981) *Syst Zool* 30:147–155.
- Williams EE (1989) in *Biogeography of the West Indies: Past, Present, and Future*, ed Woods CA (Sandhill Crane, Gainesville, FL), pp 1–46.
- Hedges SB, Hass CA, Maxson LR (1992) *Proc Natl Acad Sci USA* 89:1909–1913.
- Hedges SB (1996) *Annu Rev Ecol Syst* 27:163–196.
- Roca AL, Bar-Gal GK, Eizirik E, Helgen KM, Maria R, Springer MS, O'Brien SJ, Murphy WJ (2004) *Nature* 429:649–651.
- Hedges SB (2006) *Ann MO Bot Gard* 93:231–244.
- Hedges SB (1996) in *Contributions to West Indian Herpetology: A Tribute to Albert Schwartz*, eds Powell R, Henderson RW (Society for the Study of Amphibians and Reptiles, Ithaca, NY), pp 95–127.
- Seidel ME (1988) *Am Mus Novit* 2918:1–41.
- Seidel ME (1996) in *Contributions to West Indian Herpetology: A Tribute to Albert Schwartz*, eds Powell R, Henderson RW (Society for the Study of Amphibians and Reptiles, Ithaca, NY), pp 169–174.
- Nicholson KE, Glor RE, Kolbe JJ, Larson A, Hedges SB, Losos JB (2005) *J Biogeogr* 32:1–10.
- Droxler AW, Burke KC, Cunningham AD, Hine AC, Rosencrantz E, Duncan DS, Hallock P, Robinson E (1998) in *Tectonic Boundary Conditions for Climate Reconstructions*, eds Crowley TJ, Burke KC (Oxford Univ Press, New York).
- Williams EE (1969) *Q Rev Biol* 44:345–389.
- Gregory-Wodzicki KM (2002) *Palaeogeogr Palaeoclimatol Palaeoecol* 180:331–348.
- MacFadden BJ (2006) *Trends Ecol Evol* 21:157–165.
- Duellman WE (1999) in *Patterns of Distribution of Amphibians*, ed Duellman WE (The Johns Hopkins Univ Press, Baltimore), pp 255–328.
- Kumar S, Tamura K, Nei M (2004) *Briefings Bioinf* 5:150–163.
- Swofford DL (2003) *PAUP*: Phylogenetic Analysis Using Parsimony and Other Methods Version 4*. (Sinauer, Sunderland, MA).
- Stamatakis A (2006) *Bioinformatics* 22:2688–2690.
- Ronquist F, Huelsenbeck JP (2003) *Bioinformatics* 19:1572–1574.
- Thorne JL, Kishino H (2002) *Syst Biol* 51:689–702.
- Yang Z, Yoder AD (2003) *Syst Biol* 52:705–716.
- Pindell JL, Kennan L (2002) *Plate Model for the Caribbean* (University of Texas, Austin, TX) www.ig.utexas.edu/CaribPlate/forum/pindell/pindell_kennan.htm.